

# impero classroommanager

## technical datasheet: system and security requirements

Before you install Impero Classroom Manager, we recommend that you review this document to ensure that your network hardware, software and other elements meet the requirements. Please note the following minimum specifications for server and client install versions:

### supported client standards

#### Windows

- > Microsoft Windows XP SP3, Vista, Windows 7, Windows 8/8.1, Windows Server 2003/2008, Citrix, NComputing, Virtualisation
- > Microsoft .Net Framework 3.5 SP1
- > 32 and 64 bit Operating Systems
- > Windows Installer 3.5
- > Intel Pentium Processor 1.6GHz or higher
- > 1GB RAM
- > TCP/IP connection
- > 5 GB HDD free space

#### Apple Mac

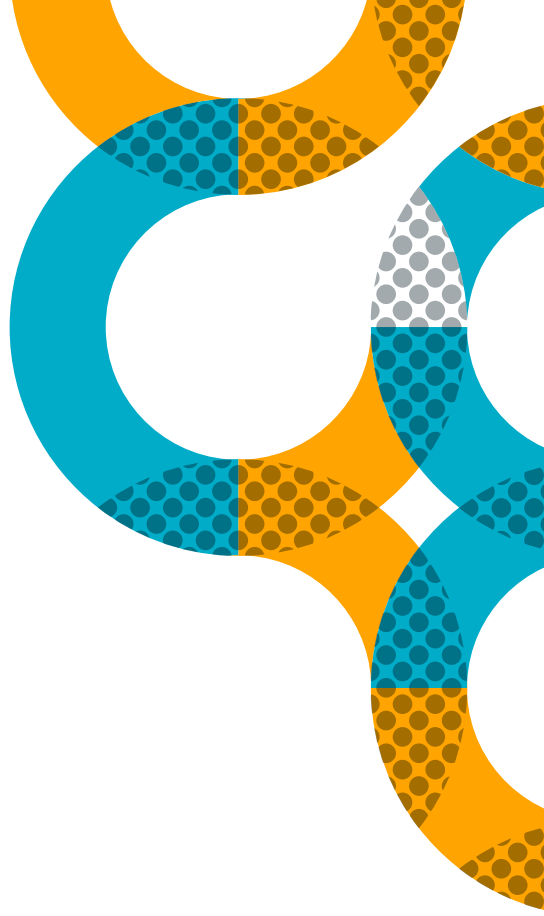
- > Intel Mac
- > Apple Mac 10.6+ Operating Systems
- > 32 and 64 bit Operating Systems
- > TCP/IP connection
- > 5 GB HDD space

#### supported server configuration

- > Microsoft Windows XP SP3, Vista, Windows 7, Windows 8/8.1, Windows Server 2003/2008/2012
- > Microsoft .NET Framework 3.5 SP1
- > 32 and 64 bit Operating Systems
- > 2.0+ Dual Core processor
- > 4 GB RAM
- > Approximately 150 MB HDD for installation
- > 40 GB HDD free space (depending on retention policy)
- > TCP/IP connection
- > Internet connection required for Impero Server registration
- > Impero recommends server is not installed on a domain controller

#### Impero console app for iPad/ iPhone

- > iOS v6 or later
- > WiFi connection to LOCAL network – check firewall permissions



## network diagram

